

Upper Limb Product Directory



Table of Contents

Hand Splints

S.O.T Thumb Orthosis	6
S.O.T Resting Splint	8
SELECTION® Childrens Thumb	12
SELECTION® Childrens Wrist	12
SELECTION® Childrens Open Wrist	12
SELECTION® Wrist Short.....	13
SELECTION® Thumb Soft	13
SELECTION® Thumb Rigid.....	13
SELECTION® Wrist Soft	14
SELECTION® Wrist Rigid	14
SELECTION® Ulnar Deviation	15
SELECTION® Multiopen	16
SELECTION® Radialis Thumb Section	17
SELECTION® Radialis Finger Section	17
SELECTION® Fingerloop.....	18

Elements Body

Glove & Sleeve	20
Trial Sleeve	21
Easy On	21



Hand Splints

S.O.T Thumb Orthosis



Positions the thumb in an optimal resting position. A Unique Orthotic Solution for Thumb and Palm This orthosis is designed to restrict movement at the CMC and MCP joints of the thumb, support the arches of the hand, whilst positioning the thumb in an optimal position for management of pain, joint stability and soft tissue length, that could lead to mal-alignment or subluxation of the joint.

Features

- The orthosis has an adjustable aluminium core that can easily be shaped to fit individual anatomy.
- The orthosis can be adjusted as the thumb CMC position changes.
- The orthosis can be machine washed with cover attached at 40°C.
- The smooth design makes it an excellent alternative to custom made thumb orthosis.

Intended use

Osteoarthritis*, rheumatoid arthritis, adduction contracture of the thumb, overload injury of the CMC joint.

*OA in CMC region, stages 1-4. At OA in stage 4, the scaphoid is also involved. The thumb support should then be combined with a wrist orthosis. Eaton and Littler Classification of Basilar Thumb Arthritis.

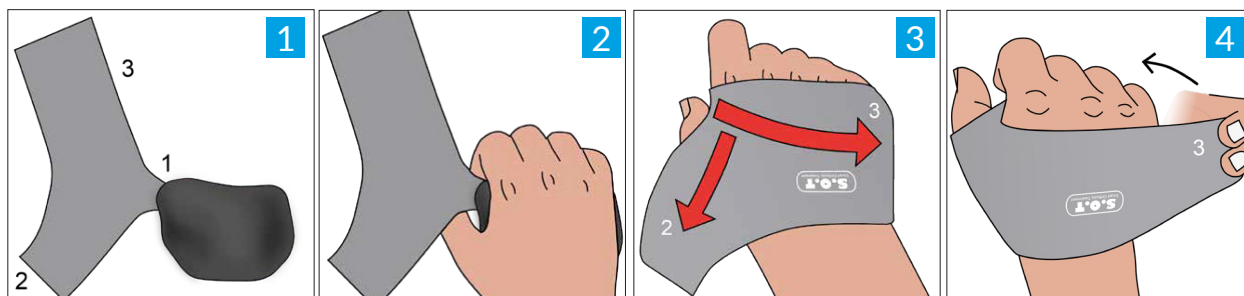
Item No.	Description	Side	Size	MCP Width**	Length ** (from wrist to fingertip)
28720 1011	S.O.T. Thumb Orthosis*	Left	Small	≤ 7,5 cm	≤ 18,5 cm
28720 1012	S.O.T. Thumb Orthosis*	Left	Medium	≤ 8,5 cm	≤ 20 cm
28720 1013	S.O.T. Thumb Orthosis*	Left	Large	≤ 9 cm	≤ 21 cm
28720 2011	S.O.T. Thumb Orthosis*	Right	Small	≤ 7,5 cm	≤ 18,5 cm
28720 2012	S.O.T. Thumb Orthosis*	Right	Medium	≤ 8,5 cm	≤ 20 cm
28720 2013	S.O.T. Thumb Orthosis*	Right	Large	≤ 9 cm	≤ 21 cm
28721 1011	Extra cover	Left	Small		
28721 1012	Extra cover	Left	Medium		
28721 1013	Extra cover	Left	Large		
28721 2011	Extra cover	Right	Small		
28721 2012	Extra cover	Right	Medium		
28721 2013	Extra cover	Right	Large		

* complete orthosis with one cover

** Relation between MCP width and wrist to fingertip length can vary. Regard the size interval only as a guide.

Fitting

To ensure optimal function it is important that the cover is well adjusted. Attach the cover in sequences, keep the thumb section (1) attached from the start. Then attach 2 and 3, and if needed adjust 1. Finally adjust and make sure it fits comfortably.

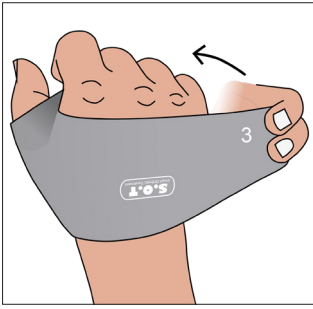


Open the wide straps 2 & 3 and leave strap 1 at its position.

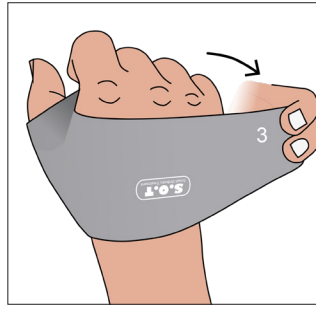
Place the hand on the support.

Pull the strap over the hand and attach strap 3 and then strap 2 on the Velcro on the inside of the support. Adjust strap 1 and 2 for comfort.

Don

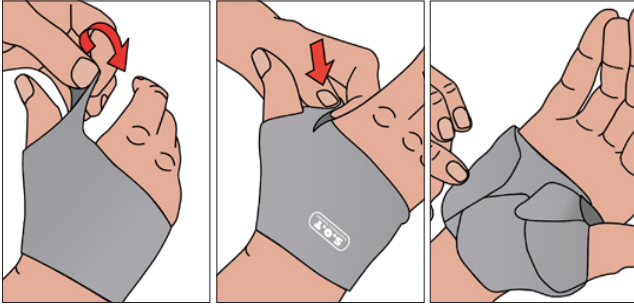


Doff



For donning and doffing, after initial fitting, only open strap 3 on the ulnar side. Strap 3.

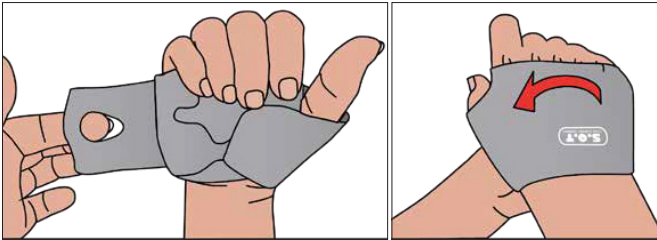
Adducted thumb



Adducted thumb

If the patient has severely adducted thumb and the space between thumb and index finger is limited, the thumb strap can be rotated to improve the fit.

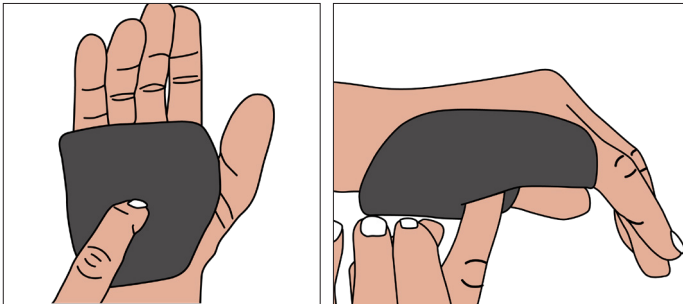
Limited muscle function



Limited hand muscle function

If the patient has limited function in their hand and fingers, donning and doffing can be made easier by making a hole in the material on the ulnar side.

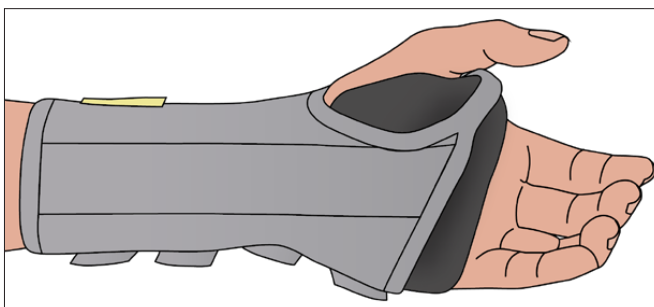
Extra support for MCP-Joint



Chose a larger size to give the user increased support for MCP dig. 2-5.

The orthosis can then give ulnar support for the MCP-joint that may also prevent ulnar deviation.

Additional support for the wrist

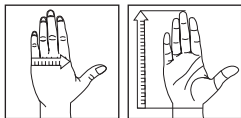


When extra support is needed for the wrist, the SOT Thumb orthosis can be used together with a wrist brace, such as 35207 Selection Open Wrist.

With adduction contracture that have developed due to forearm fracture immobilization, SOT thumb orthosis combined with a wrist orthosis may be advantageous for night-time treatment.

With carpal tunnel syndrome, in addition to a wrist support, it is advantageous to off-load the finger flexors by giving support under the MCP joints and that way open up the hand to provide more space for the median nerve in the carpal tunnel during the night.

This is also beneficial for patients with intrinsic shortening. The SOT thumb orthosis cover is then removed and the product is positioned inside the wrist orthosis as shown.



S.O.T Resting Splint

Many patients who have experienced a stroke, over time may get a variety of complications, such as spasticity, paralysis, pain, loss of sensation, decreased proprioception and oedema of the hand and arm. These complications can cause a reduction of mobility in the hand and eventually contractures may develop, therefore, it is important to start with orthotic treatment, along with hand therapy at an early stage, before spasticity is established, and contractures occur. S.O.T is a smooth, lightweight resting splint that has an aluminium core that allows adjustment to the desired position. The aluminium core is embedded into polyethylene foam and covered with fabric. The brace is delivered in a resting position, this position offers relaxation to the hand and may also give pain relief to the patient, it also provides a good biomechanical position that may reduce the risk of flexor shortening at the wrist and fingers. Patients suffering with rheumatoid pain may benefit from S.O.T, as it prevents the hand from falling into unfavourable painful positions. The orthosis can be adjusted into an alternative resting position.

Prevents or reduces the risk of oedema

Instead of conventional straps over the fingers, hand and arm (that can cause oedema) the S.O.T Resting Splint has a soft elasticated cover, which keeps the hand and arm in place. The pressure-distribution cover, in combination with an optimal position of the wrist and hand reduces the risk of oedema as it facilitates venous return. The material's smooth outer surface, and its low profile allow the orthosis to fit under clothing.

Accessories

A non-elastic wrist strap can be attached to the soft elasticated cover to provide firmer pressure over the wrist (for spasticity) The S.O.T finger dividers prevent skin irritations between the fingers. It also prevents ulnar/radial deviation at the fingers and contributes to a better position. Wedges can be purchased to apply a further stretch of the long finger flexors (Flexor Digitorum Profundis and Superficialis) or they can be positioned to stretch the Intrinsic muscles (Interossei and Lumbricals). The wedges can also be placed to increase the extension of the wrist without reshaping the orthosis.

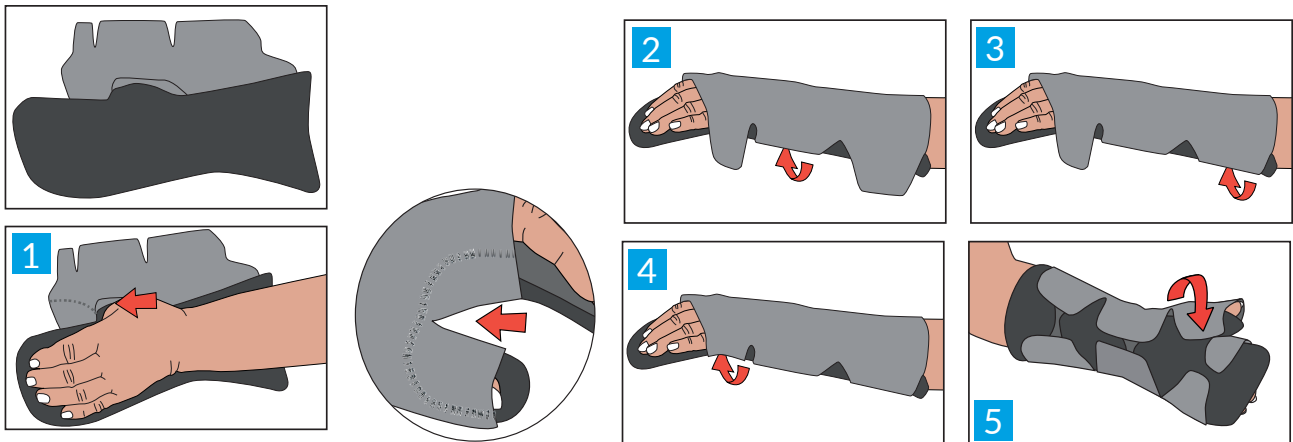
Intended Use

S.O.T is a resting splint designed for patients with spasticity or paresis of the hand and arm when the objective is to maintain or increase the mobility of the upper limb.

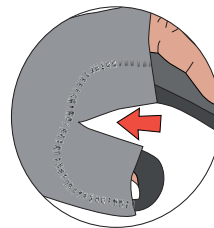
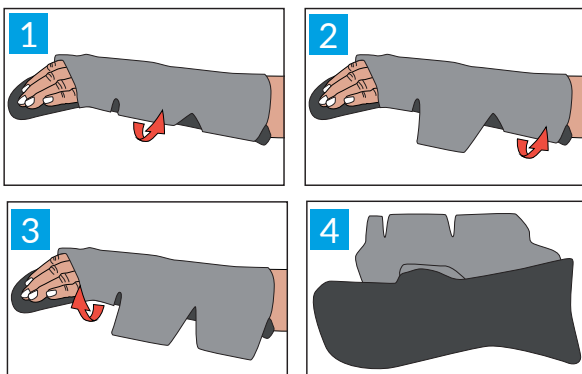
Item no. Left	Item no. Right	Description	Side	Size	MCP Width	Wrist to finger tlp
28710 1008	28710 2008	S.O.T Resting splint	L/R	XXX-Small	5,5cm	≤ 12cm
28710 1009	28710 2009	S.O.T Resting splint	L/R	XX-Small	≤ 6,5cm	≤ 14cm
28710 1010	28710 2010	S.O.T Resting splint	L/R	X-Small	≤ 7,5cm	≤ 16cm
28710 1011	28710 2011	S.O.T Resting splint	L/R	Small	≤ 7,5cm	≤ 18.5cm
28710 1012	28710 2012	S.O.T Resting splint	L/R	Medium	≤ 8,5cm	≤ 20cm
28710 1013	28710 2013	S.O.T Resting splint	L/R	Large	≤ 9 cm	≤ 21cm
28711 0009		MCP wedge	Bilat.	XX-Small	Width 65mm	Height 10mm
28711 0011		MCP wedge	Bilat.	Small	Width 75mm	Height 15mm
28711 0013		MCP wedge	Bilat.	Large	Width 90mm	Height 20mm
28712 0003		Finger divider	Bilat.	Paediatric		
28712 0005		Finger divider	Bilat.	Medium		
28712 0007		Finger divider	Bilat.	Large		
28713 0009		Extra strap	Bilat.	XXXS-XS		
28713 0012		Extra strap	Bilat.	Small-Large		
28714 1008	28714 2008	Additional cover	L/R	XXX-Small		
28714 1009	28714 2009	Additional cover	L/R	XX-Small		
28714 1010	28714 2010	Additional cover	L/R	X-Small		
28714 1011	28714 2011	Additional cover	L/R	Small		
28714 1012	28714 2012	Additional cover	L/R	Medium		
28714 1013	28714 2013	Additional cover	L/R	Large		

How to put on the orthosis

To ensure optimal function it is important that the cover is well applied and adjusted correctly in the thumb section (see illustration in circle below). Attach the cover by starting with the strap over the wrist. Make sure it is equally attached and comfortable. If the hand is swollen a larger size cover may be needed.

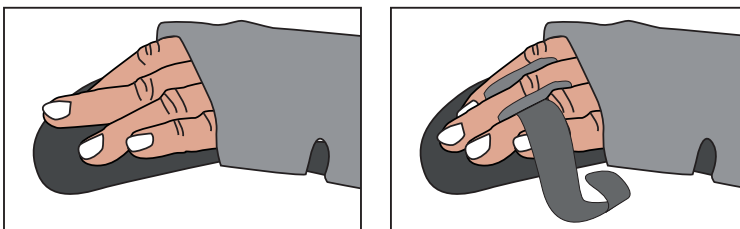


How to remove the orthosis

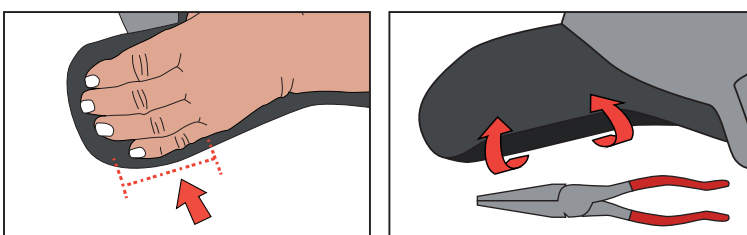


Loosen the cover only on the ulna side in order as shown in illustrations above. Leave the cover attached on the radial side, between the thumb and the first finger (see illustration in circle above). In this way it is easier to put the orthosis back on again.

Different ways to use the finger divider

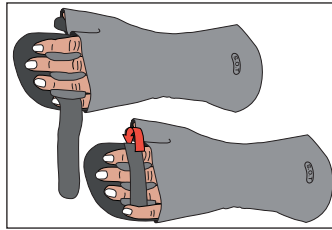
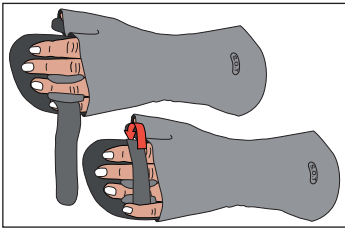


If one or more of the PIP-joints have a Swan neck deformity, the finger divider can act as a finger lift and counteract excessive PIP-joints. Then use the strap and the "walls" as support.



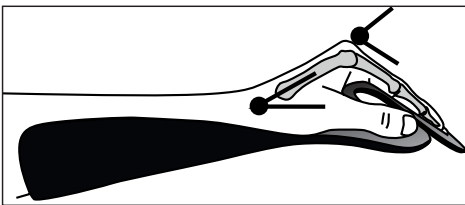
If extra support is needed on the ulna side, gently bend the edge of the orthosis with pliers.

Different ways to use the finger divider

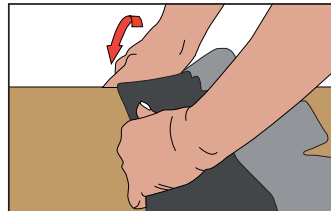
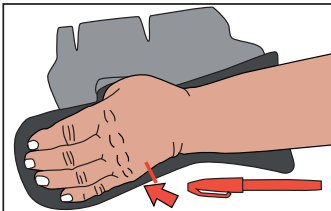


The finger divider can be used for one or more fingers. The walls of the finger divider that are not needed can be cut away. The strap must be crossed over the fingers and attached to the bottom of the orthosis.

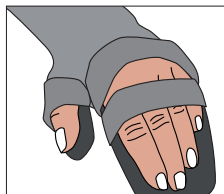
How to re-shape from resting-position to Rehab-position



To remould the orthosis in to POSI-position (Position of Safe Immobilization), the distal section of the splint must be adjusted. The area at the MCP-joints must be bent into between 60 - 80° of flexion and the area for the IP- and DIP-joints should be straighten to full extension.

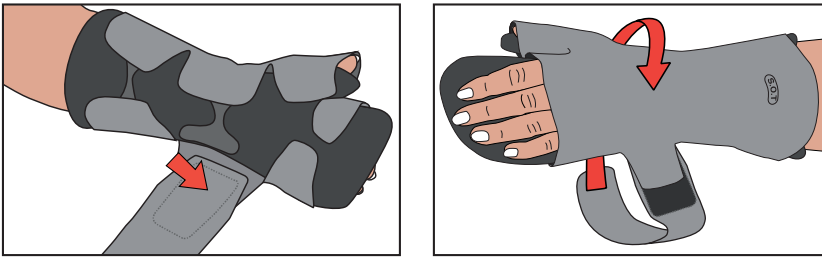


The orthosis has a core of aluminium that allows it to be transformed from its original position, Resting-Position, to Rehab-Position. To do this, use a size smaller and make a mark at the distal curve where the orthosis should be bent. Bend the orthosis over a table edge. It is important not to bend back and forth too many times because the aluminium is soft and may become weak and ineffective. Then straighten the area for PIP and DIP joints to full extension.



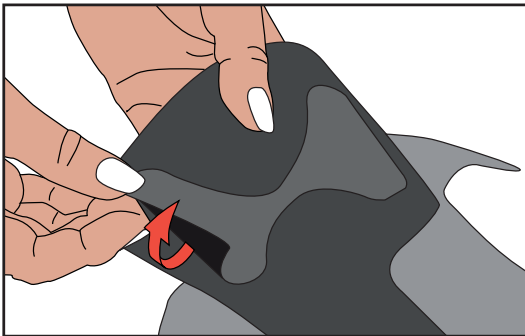
When the orthosis is to be used in Rehab-position, the cover can be folded back so that the MCP-joints are free and an extra strap is placed over the fingers as shown.

Extra strap and it's function



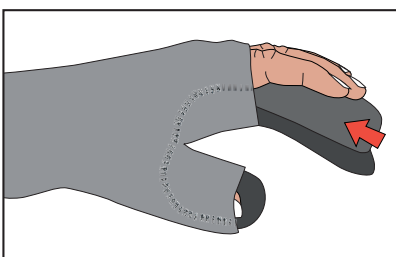
The extra strap is applied to the lining on the ulna side and wraps around the dorsal wrist, and passes over the radial side to hold the wrist in position on the orthosis. Position the extra strap onto the cover so that a piece of hard Velcro protrudes for the strap to attach to.

How to re-position the velcro on the brace

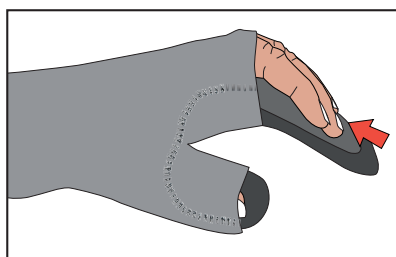


The Velcro straps located on the underside of the orthosis can easily be moved to new positions if necessary. Firmly tighten the Velcro against the product, otherwise they may loosen or change position during use.

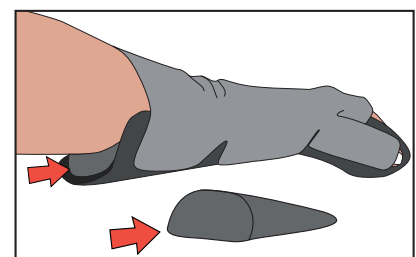
How to use the wedges for different purposes



With the high part of the wedge distally, the stretch of the long finger flexors (Flexor Digitorum Profundus and Superficialis) increases.



With the lower part of the wedge positioned distally the stretch of Intrinsic muscles (Interossei and Lumbricals) increases.



To increase the extension of the wrist without re-shaping the orthosis, put the wedge in the back of the orthosis with the high part at the back.

SELECTION®

Allard wrist and thumb supports are made from a material developed exclusively for Allard. Selection® Powernet, the inner textile mesh gives the material its perfect elasticity and recovery for good consistent support. Selection® Air is a thin, soft and 100% air permeable material used in selected parts of the orthosis where textile doesn't impact on function or retain heat, giving a smooth finish. Together Selection® Air and Powernet can mould to anatomical contours that allow unrestricted movement and stability. A perfect fit that is soft inside and durable outside. Elegant with high comfort.



SELECTION® Childrens Thumb

Selection® Thumb orthosis for children is elastic all the way around and the design keeps the thumb in a relaxed and pain free position.

Item No. Left	Item No. Right	Colour	Size	Wrist circumference	Palm Height	Total Length	Approx. Age
35300 1009	35300 2009	Black	XX-Small	8 - 11 cm	5 - 6 cm	11 cm	0,5 - 2 years
35300 1010	35300 2010	Black	X-Small	8 - 11cm	6 - 7 cm	13,5 cm	2 - 3 years
35300 1011	35300 2011	Black	Small	10 - 12 cm	7 - 8 cm	14,5 cm	3 - 6 years
35300 1012	35300 2012	Black	Medium	12 - 14 cm	8 - 9 cm	17 cm	6 - 11 years
35300 1013	35300 2013	Black	Large	14 - 16 cm	8 - 9 cm	17,5 cm	11 - 13 years



SELECTION® Childrens Wrist

Selection® Wrist orthosis for children is made with two stepless closures for simple adjustment. The thumb strap is adjustable. Simple aluminum stay that is easy to shape. Added colour for children.

Item No. Left	Item No. Right	Colour	Size	Wrist circumference	Palm Height	Total Length	Approx. Age
35305 1009	35305 2009	Black	XX-Small	8 - 11 cm	5 - 6 cm	11 cm	0,5 - 2 years
35305 1010	35305 2010	Black	XSmall	8 - 11cm	6 - 7 cm	13,5 cm	2 - 3 years
35305 1011	35305 2011	Black	Small	10 - 12 cm	7 - 8 cm	14,5 cm	3 - 6 years
35305 1012	35305 2012	Black	Medium	12 - 14 cm	8 - 9 cm	17 cm	6 - 11 years
35305 1013	35305 2013	Black	Large	14 - 16 cm	8 - 9 cm	17,5 cm	11 - 13 years



SELECTION® Childrens Open Wrist

Selection® Wrist orthosis for children is made with two stepless closures for simple adjustment. The thumb strap is adjustable. Simple aluminum stay that is easy to shape. Added colour for children.

Item No. Left	Item No. Right	Colour	Size	Wrist circumference	Palm Height	Total Length	Approx. Age
35306 1011	35306 2011	Black	Small	11,5 - 14 cm	7 - 8 cm	13,5 cm	3 - 6 years
35306 1012	35306 2012	Black	Medium	12 - 15,5 cm	8 - 9 cm	14,5 cm	6 - 11 years
35306 1013	35306 2013	Black	Large	14 - 16,5 cm	8 - 9 cm	17 cm	11 - 13 years

SELECTION® Wrist Short

Selection® Short is similar to Selection® Wrist Soft, low cut and without any stay on the volar side. It has the same strapping features, adjustable thumb strap and made from the smooth and well appreciated Selection material.

Item No. Left	Item No. Right	Colour	Size	Wrist circumference
35222 1010	35222 2010	Black	X-Small	< 11 cm
35222 1011	35222 2011	Black	Small	11 - 14 cm
35222 1012	35222 2012	Black	Medium	14 - 17 cm
35222 1013	35222 2013	Black	Large	17 - 20 cm
35222 1014	35222 2014	Black	XLarge	20 - 23 cm
35223 1010	35223 2010	Beige	X-Small	< 11 cm
35223 1011	35223 2011	Beige	Small	11 - 14 cm
35223 1012	35223 2012	Beige	Medium	14 - 17 cm
35223 1013	35223 2013	Beige	Large	17 - 20 cm
35223 1014	35223 2014	Beige	XLarge	20 - 23 cm



SELECTION® Thumb Soft

Selection® Soft is an elastic orthosis that align and stabilize the thumb joint and provides light support.

Item No. Black	Item No. Beige	Size	Side	Wrist circumference
35200 1010	35201 1010	X-Small	Left	< 13 cm
35200 1011	35201 1011	Small	Left	13 - 15 cm
35200 1012	35201 1012	Medium	Left	15 - 17 cm
35200 1013	35201 1013	Large	Left	17 - 20 cm
35200 1014	35201 1014	X-Large	Left	> 20 cm
35200 2010	35201 2010	X-Small	Right	< 13 cm
35200 2011	35201 2011	Small	Right	13 - 15 cm
35200 2012	35201 2012	Medium	Right	15 - 17 cm
35200 2013	35201 2013	Large	Right	17 - 20 cm
35200 2014	35201 2014	X-Large	Right	> 20 cm



SELECTION® Thumb Rigid

Selection® Rigid gives increased stability due to the non-elastic fabric around the thumb section. The design supports the muscles, keeping the thumb in a neutral position.

Item No. Black	Item No. Beige	Size	Side	Wrist circumference
35202 1010	35203 1010	X-Small	Left	< 13 cm
35202 1011	35203 1011	Small	Left	13 - 15 cm
35202 1012	35203 1012	Medium	Left	15 - 17 cm
35202 1013	35203 1013	Large	Left	17 - 20 cm
35202 1014	35203 1014	X-Large	Left	> 20 cm
35202 2010	35203 2010	X-Small	Right	< 13 cm
35202 2011	35203 2011	Small	Right	13 - 15 cm
35202 2012	35203 2012	Medium	Right	15 - 17 cm
35202 2013	35203 2013	Large	Right	17 - 20 cm
35202 2014	35203 2014	X-Large	Right	> 20 cm





SELECTION® Wrist Soft

SELECTION® Wrist Soft is our wrist support that offers medium stabilization to the wrist and hand. It has a pre-shaped removable rigid stay on the volar side and a less rigid thinner removable stay on the dorsal side. It is low cut to follow the hand's natural bend and well cut around the thumb which allows the thenar muscles to work freely. The two-piece closing system makes the orthosis easy to open and close with one hand and allows adjustment of the width of the forearm. As the lacing comes from the ulnar side, the risk of misalignment of the thumb is reduced. It has an adjustable thumb grip. Due to the construction of the material it is possible to adjust the shape slightly by trimming with scissors. The length of the orthosis is 18cm on the volar side.

Item No. Left	Item No. Right	Colour	Size	Wrist circumference	Circumference 8 cm above the wrist
35204 1010	35204 2010	Black	X-Small	< 11 cm	N/A
35204 1011	35204 2011	Black	Small	11 - 14 cm	N/A
35204 1115	35204 2115	Black	Small Plus	11 - 14 cm	18 - 21cm
35204 1012	35204 2012	Black	Medium	14 - 17 cm	N/A
35204 1125	35204 2125	Black	Medium Plus	14 - 17 cm	21 - 24 cm
35204 1013	35204 2013	Black	Large	17 - 20 cm	N/A
35204 1135	35204 2135	Black	Large Plus	17 - 20 cm	24 - 27 cm
35204 1014	35204 2014	Black	X-Large	20 - 23 cm	N/A
35204 1145	35204 2145	Black	X-Large Plus	20 - 23 cm	27 - 30 cm
35204 1015	35204 2015	Black	XX-Large	> 23 cm	N/A
35204 1155	35204 2115	Black	XX-Large Plus	> 23 cm	30 - 33 cm
35205 1010	35205 2010	Beige	X-Small	< 11 cm	N/A
35205 1011	35205 2011	Beige	Small	11 - 14 cm	N/A
35205 1115	35205 2115	Beige	Small Plus	11 - 14 cm	18 - 21cm
35205 1012	35205 2012	Beige	Medium	14 - 17 cm	N/A
35205 1125	35205 2125	Beige	Medium Plus	14 - 17 cm	21 - 24 cm
35205 1013	35205 2013	Beige	Large	17 - 20 cm	N/A
35205 1135	35205 2135	Beige	Large Plus	17 - 20 cm	24 - 27 cm
35205 1014	35205 2014	Beige	X-Large	20 - 23 cm	N/A
35205 1145	35205 2145	Beige	X-Large Plus	20 - 23 cm	27 - 30 cm
35205 1015	35205 2015	Beige	XX-Large	> 23 cm	N/A
35205 1155	35205 2155	Beige	XX-Large Plus	> 23 cm	30 - 33 cm

SELECTION® Wrist Rigid

SELECTION® Wrist Rigid has the same features as the soft version, but also a thumb section added for increased thumb support and stability. The thumb strap can be individually adjusted. It comes with a pre-shaped plastic stay on the palmar side and a soft narrow plastic stay on the dorsal side.

Item No. Left	Item No. Right	Size	Colour	Wrist circumference
35206 1010	35206 2010	X-Small	Black	< 11 cm
35206 1011	35206 2011	Small	Black	11 - 14 cm
35206 1012	35206 2012	Medium	Black	14 - 17 cm
35206 1013	35206 2013	Large	Black	17 - 20 cm
35206 1014	35206 2014	XLarge	Black	20 - 23 cm
35206 1015	35206 2015	XXLarge	Black	> 23 cm

SELECTION® Ulnar Deviation

SELECTION® Ulnar Deviation is intended for the management of Ulnar Deviation. Corrects alignment of joints of the fingers to improve extension, strength and function of the hand. Reduces pain and joint stiffness. Ulnar deviation is likely to be a characteristic for those with various forms of inflammatory disease, such as Rheumatoid Arthritis. This may also be used for realignment and stabilization in patients with joint laxity and muscle weakness.

Item No. Left	Item No. Right	Colour	Size	Circumference MCP 2-5
35218 1010	35218 2010	Black	X-Small	13 - 16 cm
35218 1011	35218 2011	Black	Small	16 - 19 cm
35218 1012	35218 2012	Black	Medium	19 - 22 cm
35218 1013	35218 2013	Black	Large	22 - 25 cm





SELECTION® Multiopen

SELECTION® Multiopen is a semi-stable wrist support with double locking function. It can be opened up completely and secured loosely with Velcro and then pulled closed firmly with the lacing system. The patient can choose to either open it completely each time the orthosis is taken on/off or only use the lacing function.

The orthosis is low cut to follow the hand's natural creases and the thenar creases allowing the the muscles to work freely.

The two-part lacing and locking in combination with Velcro enables adjustment of the width for a wider forearm. As the lacing is positioned on the ulnar side, the risk of the thumb being positioned incorrectly decreases. The orthosis has an adjustable thumb strap that attaches from the volar side and fastens on the dorsal side.

The components of the fabric make it possible to cut without fraying, using scissors, to shape for optimal fit. Made in an airy and comfortable SELECTION® material with all the functions that this entails.

The orthosis is 22cm in length, i.e. 4cm longer than a SELECTION® Soft 35204. It has an adjustable aluminium stay on the volar side which is removable.

Item No. Left	Item No. Right	Colour	Size	Wrist circumference
35209 1010	35209 2010	Black	X-Small	< 11cm
35209 1011	35209 2011	Black	Small	11 - 14 cm
35209 1012	35209 2012	Black	Medium	14 - 17 cm
35209 1013	35209 2013	Black	Large	17 - 20 cm
35209 1014	35209 2014	Black	X-Large	20 - 23 cm
35209 1015	35209 2015	Black	XX-Large	23 - 26 cm

SELECTION® Radialis Thumb

The SELECTION® range presents two new products, Radialis Finger and Radialis Thumb. These are sold as separate items to make it possible to combine them as and when required for thumb and finger extension. They have been designed to use for Radial Nerve Palsy, (dropped wrist caused by damage to the Radial Nerve) to assist functional grasp and release whilst the nerve recovers. These are intended to be combined with Selection® Wrist orthosis model numbers 35204, 35205 and 35209.



Item No. Left	Item No. Right	Colour	Size	Measure
35216 1011	35216 2011	Black	Small	3 - 4 cm
35216 1013	35216 2013	Black	Large	5 - 6 cm

Measure: Length joint centre MCP1 – joint centre IP1.



SELECTION® Radialis Finger Section

Radialis Finger component comprises two sections that change to make it easier to put on and adapt to the best fit. The Finger Part is attached to the soft plush material on the dorsal side of the orthosis. Simple to attach and comfortable to use. Can also be combined with Radialis Thumb Section.



Item No. Left	Item No. Right	Colour	Size	Measure
35217 1011	35217 2011	Black	Small	17 - 20 cm
35217 1012	35217 2012	Black	Medium	20 - 23 cm
35217 1013	35217 2013	Black	Large	23 - 27 cm

Measure: Circumference MCP 2-5



SELECTION® Fingerloop

A twin bandage that efficiently holds two fingers or more together, for the stronger finger to assist a weaker one as support, protection and/or for increased range of motion. Can also be used as a static progressive splint for increased range of motion in DIP joint.

The bandage is made in 100% durable and quick-drying nylon. Welded with no seams and therefore easy to cut for a personal fit.

One or more pieces can be used at the same time.

The semi-prepared Fingerloop sheet which is 10 cm wide can easily be trimmed to individual straps in desired width by scissors.



Item No.	Model	Size	Width	Length	Package
352190000	SELECTION® Fingerloop	One Size	2 cm	15.5 cm	5
352200000	SELECTION® Fingerloop Sheet	-	10 cm	15,5 cm	1

Each Selection Wrist Support has a CS-spoon inserted on the palmar side of the orthosis. It is a pre-shaped plastic spoon with flared edges at top and bottom. A soft plastic stay is also incorporated on the dorsal side of the orthosis. Both are removable. The CS-spoon is also available in packs of 10. Item number 35210.





Elements Body



Elements Body Glove & Sleeve

A meticulously crafted range of Made-to-Measure (MTM) medical device class 1 dynamic textile orthoses, designed to meet the stringent requirements of MDR 2017/745. Our garments feature carefully selected fabrics, produced, and certified in accordance with OEKO-TEX standard 100, product class II. Our textile orthoses leverage the therapeutic benefits of dynamic compression, delivering sensory and proprioceptive feedback that is crucial for the ideal therapeutic outcome. The base material of Elements Body applies targeted compression to the body, simultaneously increasing sensory and proprioceptive feedback and accommodating natural movement. Biomechanical reinforcements are strategically positioned to further influence normal movement, soft tissue dynamics, and joint alignment, fostering stability.

Constant and consistent feedback

- Provides sustained sensory and proprioceptive input.

Motor learning and neural integration

- Augments the potential for motor learning and neural integration.

External stabilisation, alignment, and resistance

- Improves postural control and proximal stability
- Enhances quality of movement and tone.
- Promotes fluidity of movement and tone management.

Reduction of involuntary movements

- Observed to mitigate involuntary movements effectively.

Diaphragmatic support

- Provides crucial diaphragmatic support, leading to improved breathing and vocalisation.

Enhanced carer handling and transferring

- Facilitates improved handling and transferring by caregivers.



Our specialised garments have demonstrated positive outcomes in the following conditions:

Cerebral Palsy - Tailored support for individuals with cerebral palsy.

Acquired Brain Injury - Addressing tone management needs post-acquired brain injury.

Acquired Spinal Cord Injury - Providing targeted intervention for postural management after spinal cord injury.

Cerebellar Ataxia - Tailored support to manage tone challenges associated with cerebellar ataxia.

Athetosis - Effective intervention for individuals experiencing involuntary movements.

Stroke - Tailored to address tone issues arising post stroke.

Multiple Sclerosis - Offering therapeutic solutions for sensory and proprioceptive feedback, stability, and postural management.

Persistent Hypotonia - Specially designed to provide stability and alignment for individuals with persistent hypotonia.

Training prerequisite

Prior to placing an order for Elements Body, prescribers are mandated to undergo training facilitated by Allard UK. This ensures that those prescribing the garments possess the requisite proficiency to make informed decisions.

Item no.	Model
393300000	Short glove without fingers
393310000	Short glove with fingers
393350000	Long glove without fingers
393360000	Long glove with fingers
393400000	Sleeve

Elements Body Trial Sleeve

Designed to be used in the assessment process for Elements Body MTM upper limb garments. It enables the clinician to evaluate the user's response to the application of a dynamic textile garment in preparation for a made to measure upper limb garment. The Trial sleeve is only to be used for an assessment period of 2-4 weeks to assist the clinician in identifying the clinical effectiveness and tolerance prior to the provision of an Elements Body MTM Garment.



Item No.	Size	L/R	Wrist cm	Elbow cm	Biceps cm
39344 0008	XXX-Small	Bilat.	11-12	16-18	16-18
39344 0009	XX-Small	Bilat.	12-13	18-20	18-20
39344 0010	X-Small	Bilat.	13-14	20-22	20-22,5
39344 0011	Small	Bilat.	14-15	21-23	22,5-25
39344 0012	Medium	Bilat.	14-16	22-25	24-27
39344 0013	Large	Bilat.	16-18	25-28	27-30
39344 0014	X-Large	Bilat.	18-20	28-31	30-33
39344 0015	XX-Large	Bilat.	20-22	31-34	33-37



Easy On

Easy On is intended to be used as an aid when donning an Elements Body glove or sleeve. Wearing the product when donning will reduce friction and make it easier to put on the orthosis. Once the Elements Body orthosis is on, Easy On should then be removed.

Item No.	Size
393570011	Small
393570013	Large



Support for Better Life

Everyone should be able to live their life to the fullest, regardless of their mobility challenges. With innovative solutions developed in close collaboration with healthcare professionals and patients, we strive to provide Support for Better Life.

allard

Allard Support UK Ltd.

Coes Road, Dundalk, Co. Louth, A91 E868 | +353 42 932 8177 | info@allarduk.co.uk | allarduk.co.uk